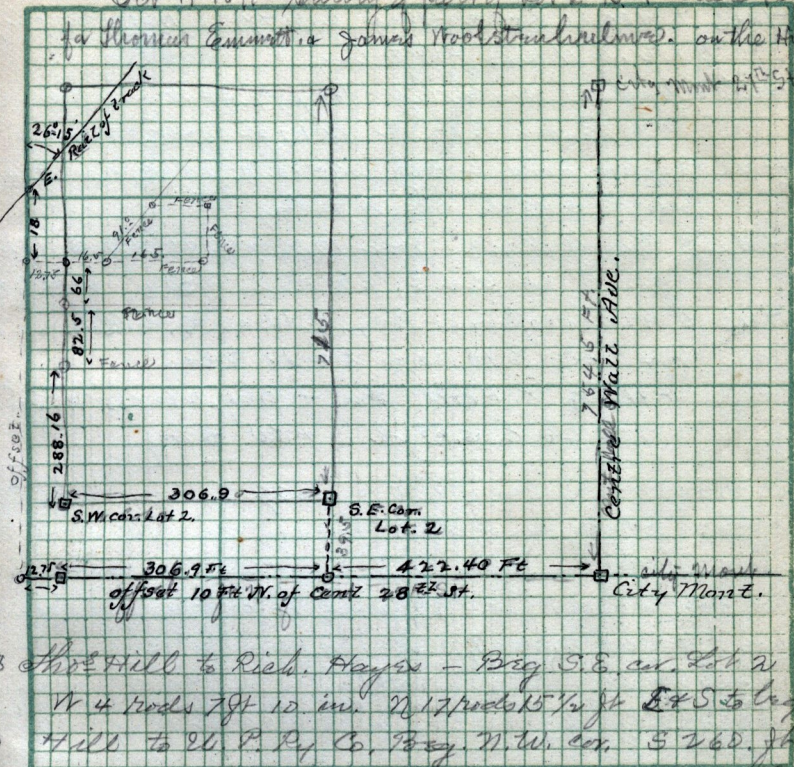


Oct 17-1891 - Survey of part of Lot 2-B-1 - 5 acres & abt. on

for Thomas Emmett & James Woodstock Holmes, on the Hill East



- J-258 Hill to Rich. Hayes - Beg. S.E. cor. Lot 2  
W 4 rods 7ft 10. in. N 17 rods 15 1/2 ft E & S to beg.
- J-300 Hill to Ch. P. Ry Co. Beg. N.W. cor. S 260. ft  
N. Easterly to pt on N. line rd Lot 128 ft E. of beg.  
W 128 ft to beg.
- J-346 Hill to P. Ford. Beg. 4 rods 7ft 10 in W of S.E. cor.  
N 31.8 ft 9" N 10 1/2 ft 6" E & S to beg.
- J-361 Hill to Lorenzo Purdy. Beg. 7 rods 8ft 9" E of S.W.  
cor. E 31.8 ft 9" N 10 1/2 ft 6" W & S to beg.
- J-365 Thomas Hill to Thos<sup>d</sup> Purdy. Beg. S.W. cor E 7 rods  
8ft 9" N 10 1/2 ft 6" W & S to beg.  
Hill to Ogden City Corp. a strip 3 rods wide along N. End
- N-265 Hill to Hamlyn. Beg. 3.42 ch N. of S.W. cor. N 85 1/2 ft  
E 365 ch S & W to beg.
- N-304 Hill to James Turner - Beg. 17 1/2 ft 9" N of S.W. cor N. 4 ft  
E 11 1/2 S & W to beg.

Chains per inch.